



Financial Report

Cash Drawer

- Sturdy metal construction
- Stainless steel front with media slot
- Manual release lock
- Five bill / five coin compartments

Feature Rich (Standard)

- Three RS-232 ports
- Cancel transaction key w/50 item buffers
- Four tax rates
- Ten media keys for tender
- Triple multiplication for item entry
- Ten auto-function keys
- Two percentage discounts
- Two selective itemizers
- Other income department (hash)
- Sales % of department
- Salespersons change during a transaction
- Customer charge file
- Link PLU
- Media pick-up warning
- Drawer open warning time setting
- Forced birthday verification
- Stock read function
- Coupon entry
- Post receipt
- Hold and Recall
- Negative check file
- Data capture
- Bottle deposit

Peripherals

- Secondary drawer
- PK-2 external PLU keyboard
- Slip printer
- Scale
- Scanner
- EFT Terminal

Options

- 4M Memory Board

Management Report		X	Z	GTX	GTZ
Combination report		*	*		
Financial report		*	*	*	*
Cashier report	All	*	*	*	*
	Individual	*	*	*	*
Sales person report		*	*		
Credit card sales report		*	*		
Department report	Gross Profit	*	-	*	*
	All	*	*	*	*
	Individual	*	-	*	*
Group Report		*	-		
Media sales & in-drawer total		*	-		
Hourly report		*	*		
All media sales & in-drawer total		*	-		
PLU	All	*	*	*	*
	Zone	*	*	*	*
	Individual	*	-	*	*
	Non-active	*	-	*	*
	All stock	*	-	*	*
	Zone stock	*	-	-	-
Customer (check track) file report	All	*	-	*	*
	Individual	*	-	*	*
	Non-active	*	-	*	*
	Debit balance	*	-	*	*
	Credit balance	*	-	*	*
	Zone	*	-	-	-
PLU group report		*	-	-	-
Money declaration		*	*	-	-

RAM Allocation

	Standard RAM	With Extended Memory (MAX)
PLU (Local)	5,000	-
PLU (Central)	-	65,000
Cashier (Local)	15	-
Cashier (Central)	-	99
Customer File (Local)	1,000	-
Customer File (Central)	-	3,000
Data capture	-	65,000
Departments	99	-
Department major groups	10	-
Department groups	30	-
PLU groups	99	-
Negative Check File	-	3,000
Salespersons	99	-
Hourly ranges	24	-
Media	10	-

Specifications

Dimensions - 410 mm width X 430 mm depth X 346 mm height
 Weight - 14.0 kg
 Power required - AC 117V + 10%; 50/60 Hz
 Power Consumed - 0.6 A @ 117V
 Ambient Temperature- 0 degrees C to 40 degrees C, 10% to 90% relative humidity
 Size of Receipt and Journal Tape - 58 mm width X max. 80 mm diameter

TEC America, Inc.
 4401-A Bankers Circle
 Atlanta, GA 30360
 U.S.A.



JCR Systems
 4936 Lenoir Avenue
 Jacksonville, Florida 32216
 Phone: 904-296-8200
 Website: www.jcrsystems.com

TEC
 Toshiba Group

HIGH QUALITY LAN ECR

ELECTRONIC CASH REGISTER

MA-1595



Built-in LAN Communications

MA-1595

ELECTRONIC CASH REGISTER

Standard Scanning Interface

- Mix and Match
- Hi-cone
- Source code and in-store code
- Price read key
- Add PLU function
- Up to 65,000 items

Standard EFT Interface

- Credit Card Authorization
- Debit Card Authorization with "PIN" pad
- ECR printer is used for voucher print (U.S. only)



Standard Scale Interface

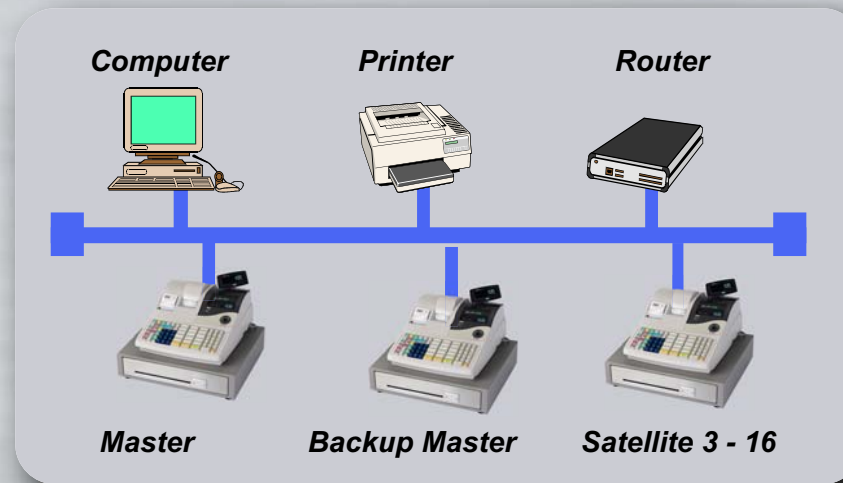
- Scale status for department and PLU
- Tare Table Programming
- Manual scale entry

Cashier Accountability

- Cashier name up to 12 characters
- Flexible cashier number entry
- 15 cashiers standard (99 maximum)
- Cashier interrupt (up to 10)
- Training mode
- Commission
- Drawer assignment for each cashier (up to 2)
- Money declaration (each cashier or system)
- Full Accountability report
- Floating Cashier

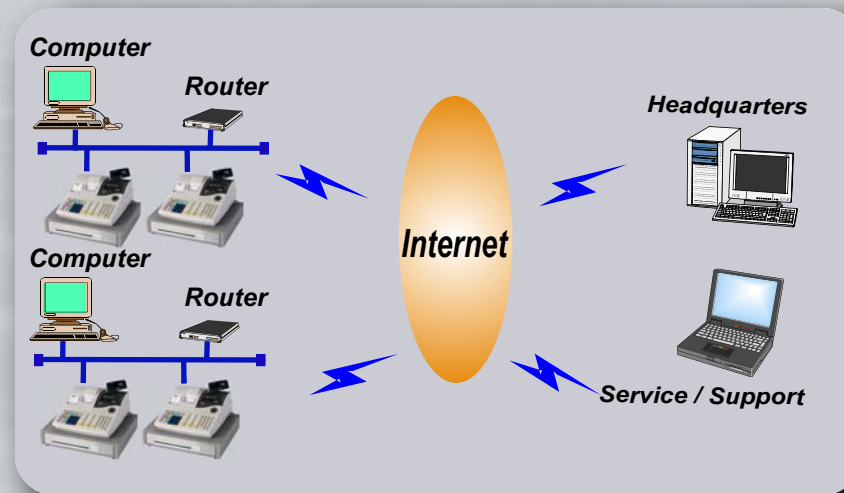
High-Speed LAN Communications (Standard)

- PC connection via LAN (TCP/IP)
- Master/backup master configuration
- Up to 16 terminals



Internet Communications

- Communicate seamlessly to a main office through the internet



Back-office Software

- Full inventory control (TBA)
- File maintenance (TBA)
- Reporting (TBA)
- Multi-store hosting (TBA)

High Quality Thermal Printer

- 58mm paper width
- 20 line/second print speed
- Silent thermal (receipt/journal)
- Journal condense print option
- Clam shell design for easy paper loading (Drop 'n Load)
- Automatic receipt cut
- Graphic logo print function



Front Display

- 16 character dot-matrix
- Alpha-numeric
- 10 digit, 7 segment
- Scrolling message up to 64 characters

Customer Display

- 10 digit, 7 segment
- Swivel



User-friendly Keyboard

- 90 key raised keyboard or 120 key full flat keyboard
- External PLU keyboard (PK-2) available
- Fully programmable keyboard

All company and/or product names are trademarks and/or registered trademarks of their respective owners. All features and specifications described on this brochure are subject to change without notice.