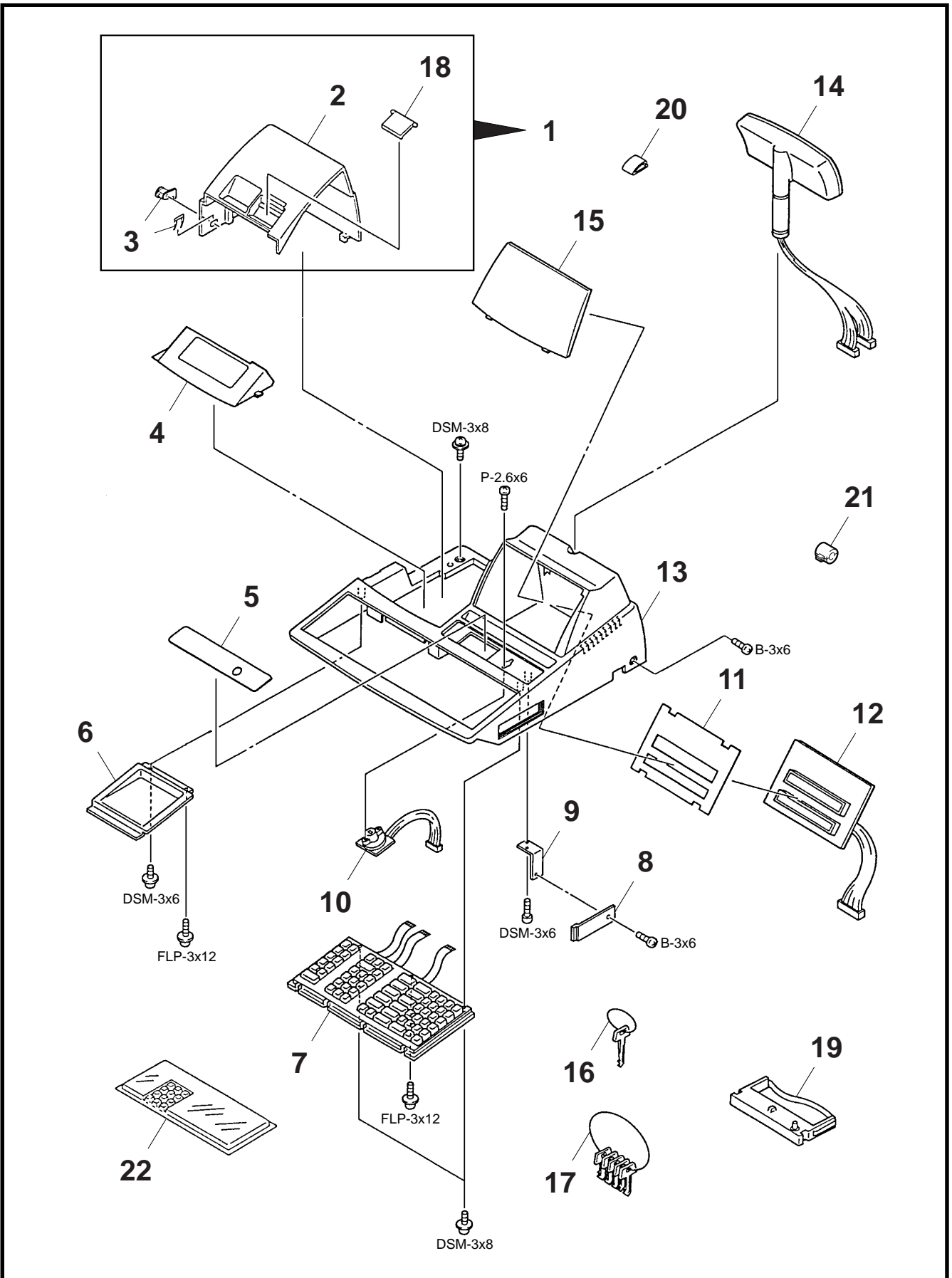


**1** TOP COVER ASS'Y

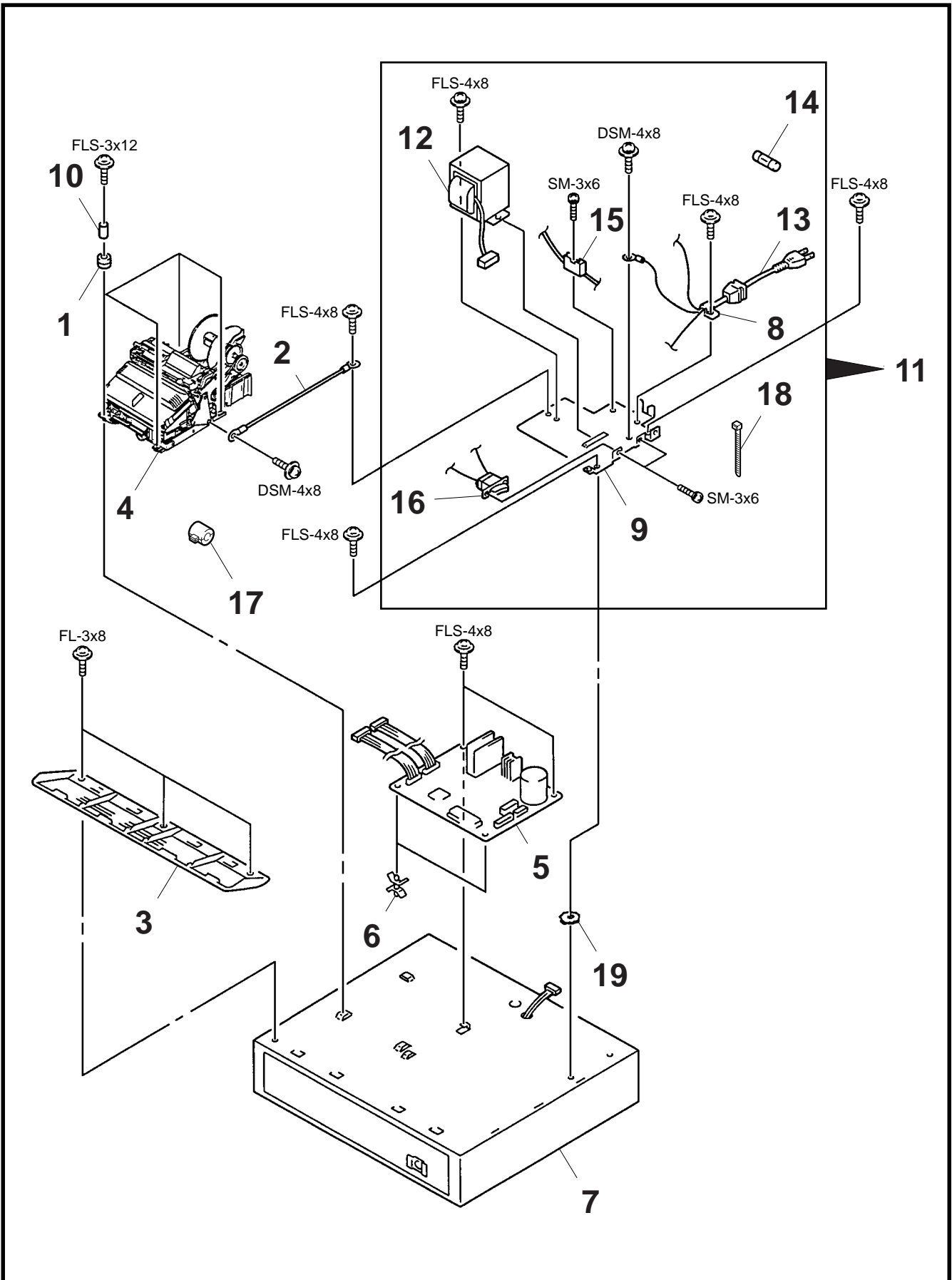


**1 TOP COVER ASS'Y**

Ref.No.	Part No.	Description	Remarks	*1	*2	*3	*4
1- 1	KBBB0003701	Receipt Cover Ass'y		1	E		
1- 2	KBCB0014001	Receipt Cover		1	E		
1- 3	KBQB0002601	Receipt Cover Lock		1	E		
1- 4	KBCB0013101	Ribbon Cover		1			o
	KBCB0013103	Ribbon Cover	Multi Validation: Changed 10/'98				
1- 5	KBMC0006304	Key SW Panel		1			o
1- 6	KBHD0000702	Coin Tester		1			
1- 7	KBBC0023601	Keyboard Unit		1	E		o
1- 8	KBHC0001701	Connector Cover		1	E		
1- 9	KBEB0003301	Connector Cover Plate		1			
1-10	<del>KBCB0012901</del> KBCB0019901	Mode Key (Cylinder)	Changed 2/'99	1	E		
1-11	KBQC0003401	FIU Mask		1			
1-12	KBBC0022801	PC Board FIU Ass'y		1	E		o
1-13	KBCC0012101	Top Cover		1			
1-14	KBBC0019001	BIU Unit		1			
1-15	KBCC0012301	FIU Panel		1			
1-16	RXX45-26101	Receipt Cover Key		1	E		
1-17	<del>TZEAK-21704</del> KBCB0019801	Key Set *1	Changed 2/'99	1			
	<del>WYA45-64901</del> FFA-0049003	MA Key	Changed 2/'99	2			
	<del>WYA45-65101</del> FFA-0049004	S Key	Changed 2/'99	2			
	<del>WYA45-67601</del> FFA-0049002	MGR Key	Changed 2/'99	2			
	<del>WYA45-67701</del> FFA-0049001	REG Key	Changed 2/'99	2			
1-18	LAHC0004201	Journal Cover		1			
1-19	KFBD0001601	Ribbon Cassette		1	E		
1-20	QXM45-22901	Shell Clip	Changed 7/'96	2 1			
<del>1-21</del>	<del>HGA-0061001</del>	<del>Ferrite Core (044S-625002)</del>	Deleted 10/'95	1			
1-22	KBQD0000101	Waterproof Cover	Option Added 12/'96	1			

\*1: (MA,S,MGR,REG)  
 2pcs.respectively

**2 BASE MOUNTING PARTS**

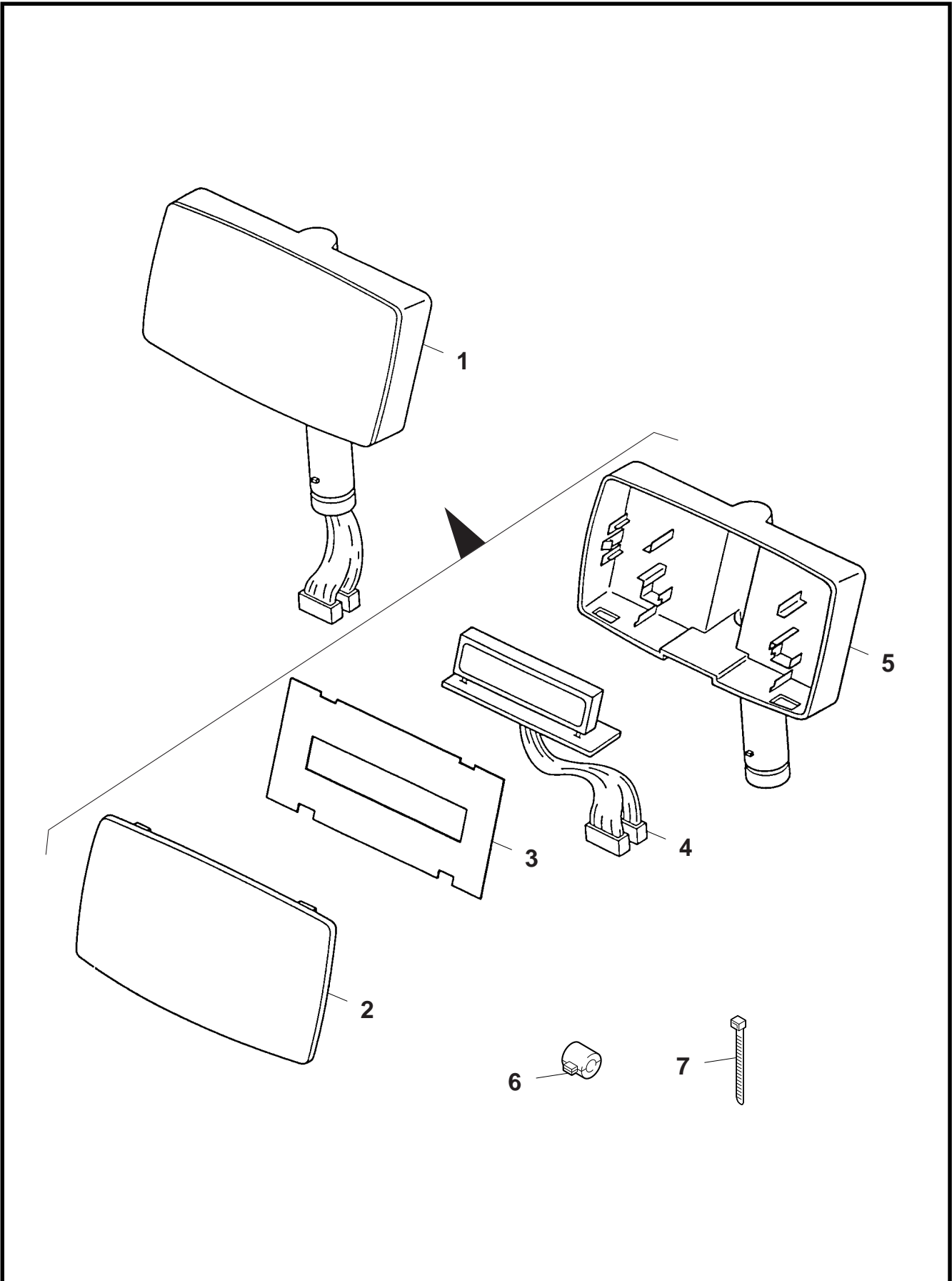


**2 BASE MOUNTING PARTS**

Ref.No.	Part No.	Description	Remarks	*1	*2	*3	*4
2- 1	KBQB0008001	Dumper Rubber A		4			
2- 2	KBQB0010201	Earth Wire Ass'y		1			o
2- 3	KBHE0004701	Front Cover		1			o
2- 4	<del>KFAE0000102</del>	<del>Printer Unit "DPR-245M-01-02"</del>		1	D		
	KFAE0000802	Printer Unit "DPR-245A-M-01-02"	Single Vali. Changed 4/'96				
	<del>KFAE0000803</del>	<del>Printer Unit "DPR-245A-M-21-02"</del>	Multi Vali.	1	D		
	KFAE0000804	Printer Unit "DPR-245A-M-61-02"	Added 4/'96 Changed 9/'98				
2- 5	KBBC0022701	PC Board CPU Ass'y		1	E		o
2- 6	FDB-0002001	Locking Support		2			
2- 7	KGAD0002601	Drawer Unit		1			o
2- 8	FDD-0040002	Nylon Clip		1			
2- 9	KBED0001401	PS Base		1			o
2-10	X9103045E13	Spacer 3x4x5.5		4			
2-11	KBBC0023501	Power Supply Ass'y		1	E		o
2-12	KBCB0002201	Transformer		1	E		
2-13	RXXAK-59501	Power Cord		1	D		
2-14	EHA-0105001	Mini Fuse 125V2A 237002		1	D		
2-15	TBEAK-32309	Fuse Holder		1			
2-16	EBE-0060002	Seesaw SW ZLA01-21		1			
2-17	HGA-0061001	Ferrite Core (044S-625002)		1			
2-18	FDC-0011003	Fasten Band		1			
2-19	X7140400620	Toothed Washer	Added 7/'97	1			

\*1: Q'ty/Unit \*2: Recommended Parts \*3: Revised Record \*4: New Parts

**3** BIU UNIT

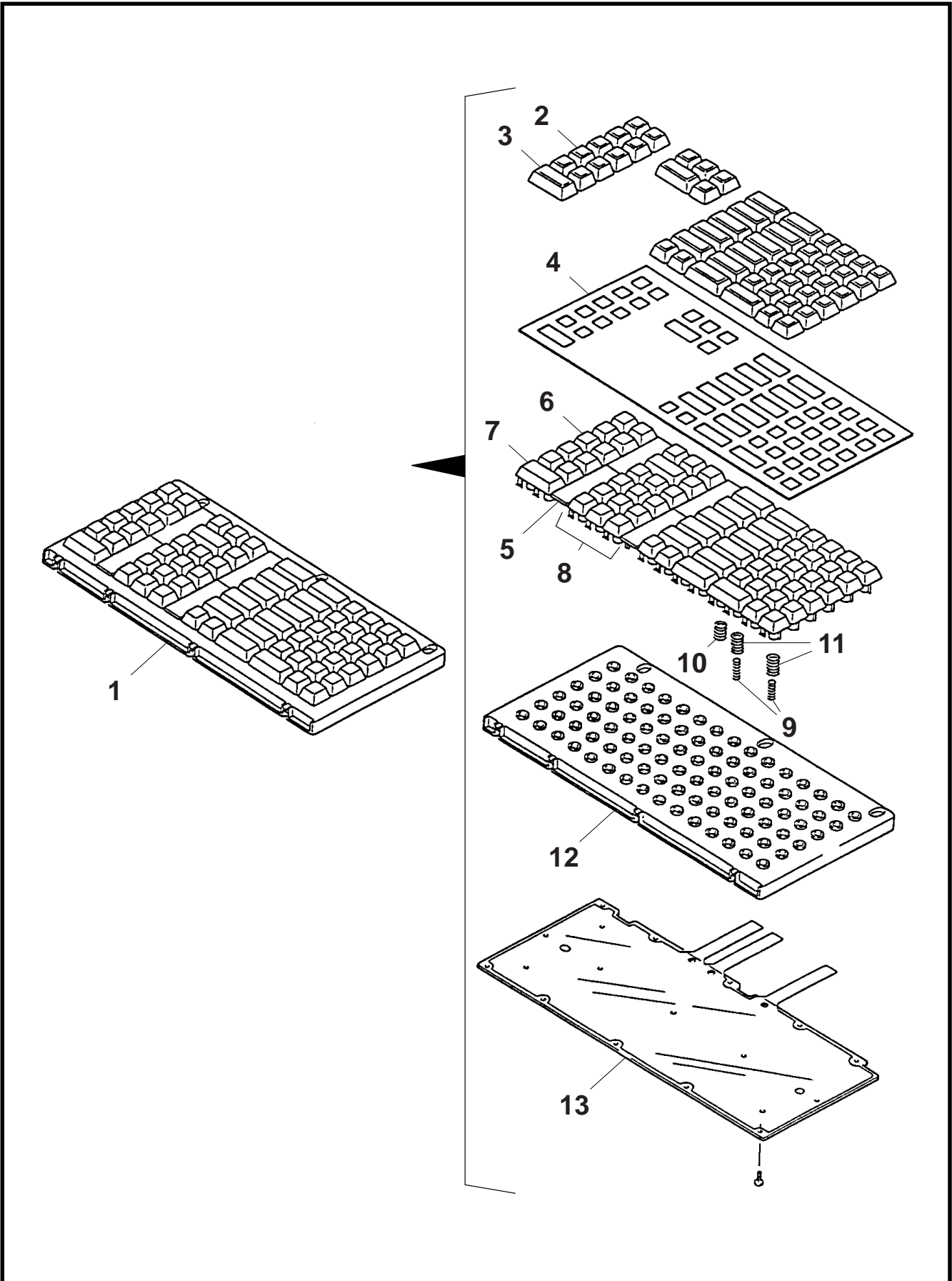


**3****BIU UNIT**

Ref.No.	Part No.	Description	Remarks	*1	*2	*3	*4
3- 1	KBBC0019001	BIU Unit		1			
3- 2	KBCC0012401	BIU Panel AK		1			
3- 3	KBQC0003501	BIU Mask		1			
3- 4	KBBB0003802	PC Board RIU2 Ass'y		1			
3- 5	KBHE0003801	BIU Case		1			
3- 6	<del>HGA-0061001</del>	<del>Ferrite Core 044S-625002</del>		1			
	DDA-0230001	Ferrite Core 2643-625002	Changed 2/'97				
3- 7	EMA00-00400	Fasten Band		1			

\*1: Q'ty/Unit \*2: Recommended Parts \*3: Revised Record \*4: New Parts

**4** KEYBOARD UNIT

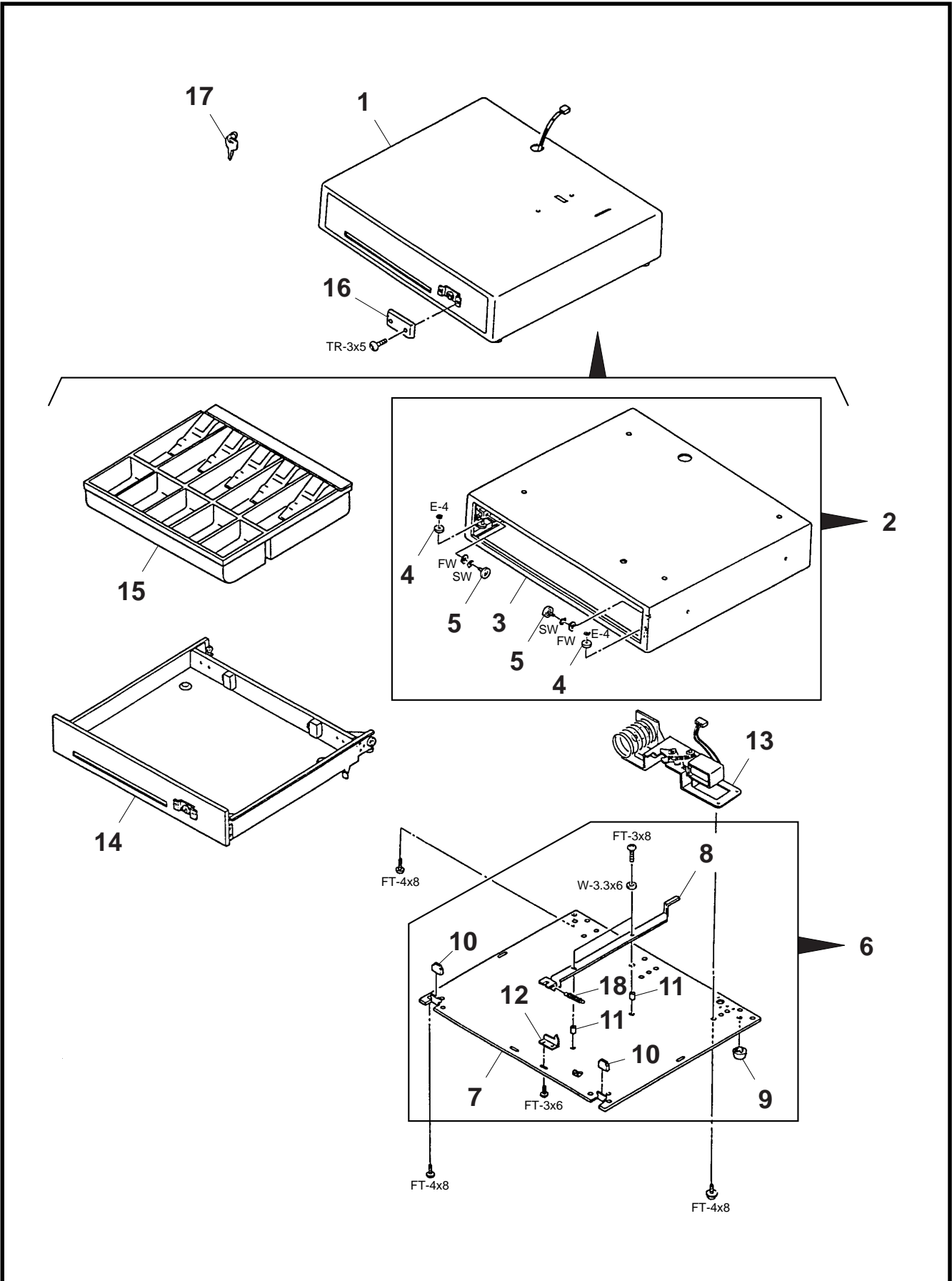


**4** **KEYBOARD UNIT**

Ref.No.	Part No.	Description	Remarks	*1	*2	*3	*4
4- 1	KBBC0023601	Keyboard Unit		1			0
4- 2	KBYB0000901	Key Cap 1x1		38			
4- 3	KBYB0001001	Key Cap 1x2		14			
4- 4	KBMC0003901	Sticker Sheet	English	1			
4- 5	KBHC0000604	Dummy Key Cover 3x1		4			
4- 6	EEI00-25200	Key Top 1x1		38			
4- 7	EEI00-25300	Key Top 1x2		14			
4- 8	EEI00-26900	Key Top .		1			
	EEI00-26300	Key Top 0		1			
	EEI00-26400	Key Top 00		1			
	EEI00-25400	Key Top 1		1			
	EEI00-25500	Key Top 2		1			
	EEI00-25600	Key Top 3		1			
	EEI00-25700	Key Top 4		1			
	EEI00-25800	Key Top 5		1			
	EEI00-25900	Key Top 6		1			
	EEI00-26000	Key Top 7		1			
	EEI00-26100	Key Top 8		1			
	EEI00-26200	Key Top 9		1			
4- 9	EEN01-00900	Contact Spring		64			
4-10	EEN01-01000	Return Spring for 1x1		50			
4-11	EEN01-01100	Return Spring for 1x2		28			
4-12	KBQH0001301	Keyboard Frame		1			
4-13	KBQH0004401	FPC Ass'y		1			

\*1: Q'ty/Unit \*2: Recommended Parts \*3: Revised Record \*4: New Parts

**5** DRAWER UNIT



**5** **DRAWER UNIT**

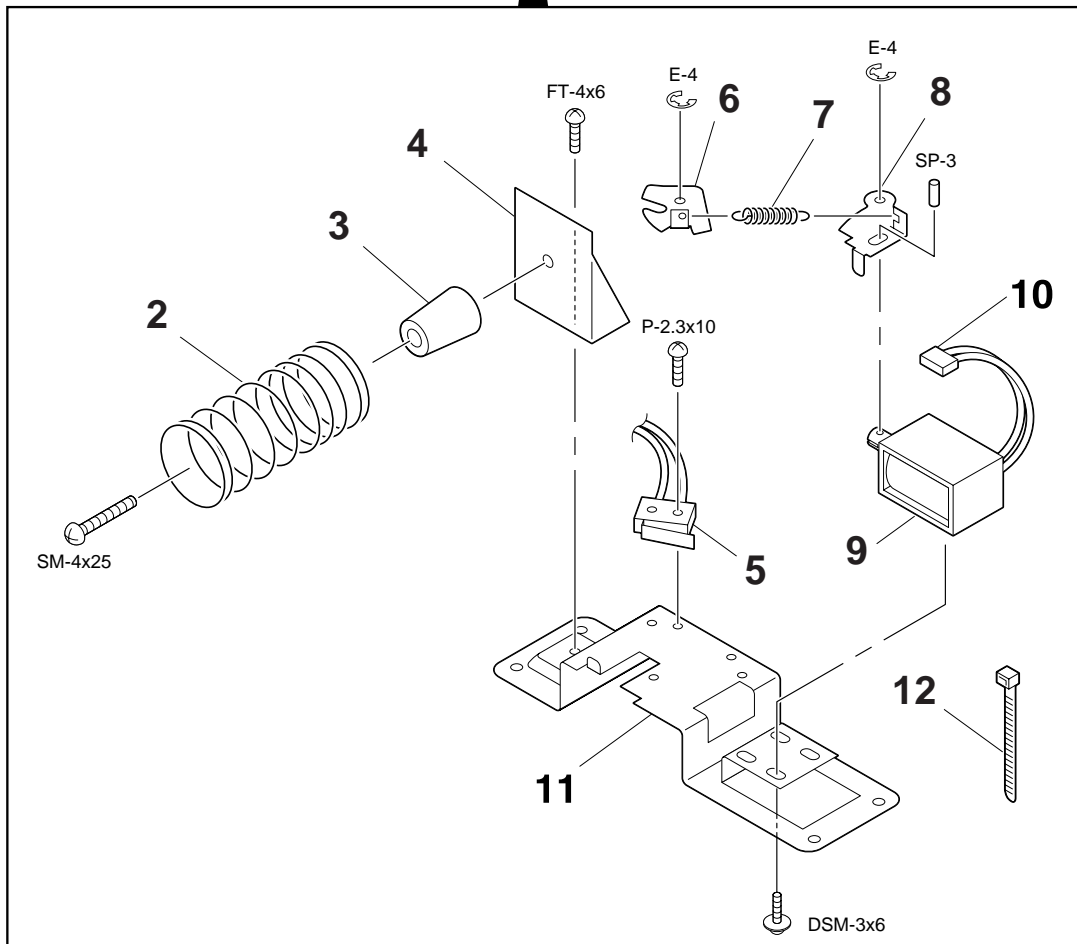
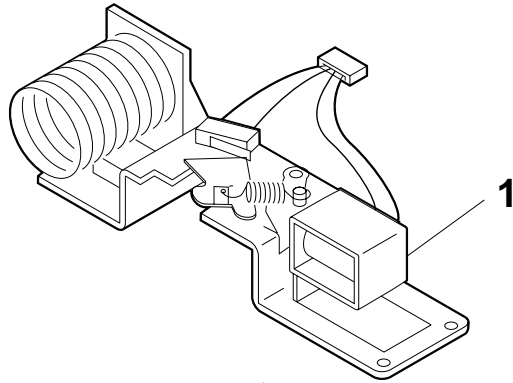
Ref.No.	Part No.	Description	Remarks	*1	*2	*3	*4
5- 1	KGAD0002601	Drawer Unit		1			0
5- 2	KGBC0000923	Cabinet Ass'y		1			0
5- 3	KGCC0001117	Cabinet		1			0
5- 4	RXM35-00201	Side Roller		2	E		
5- 5	QCM45-50401	Delrin Bearing		2	E		
5- 6	RXMBK-00301	Base Ass'y		1			
5- 7	RXM20-01501	Base		1			
5- 8	<del>RXM20-02301</del> KGED0003901	Release Lever	Changed 1/'98	1			
5- 9	RXX45-15701	Rubber Foot		4			
5-10	RXM45-00101	Stopper Rubber		2			
5-11	WPM45-03505	Spacer					
5-12	<del>RXM20-05401</del> KGEB0007901	Release Lock	Changed 1/'98	1			
5-13	RXMBK-02801	Drawer Release Block Ass'y		1	E		
5-14	KGBD0000201	Cash Box Ass'y		1			
5-15	RXXBK-01401	Money Case Ass'y MC-4		1			
5-16	RXX35-05503	D Key Cap		1			
5-17	KGQB0001101	Drawer Release Key		2	E		
5-18	E0500400194	Spring					

\*1: Q'ty/Unit \*2: Recommended Parts \*3: Revised Record \*4: New Parts



**DRAWER RELEASE BLOCK ASS'Y (SP TYPE)**  
**(P/N: RXMBK-02801)**

(Revision Date: Sep. 17, 2001)





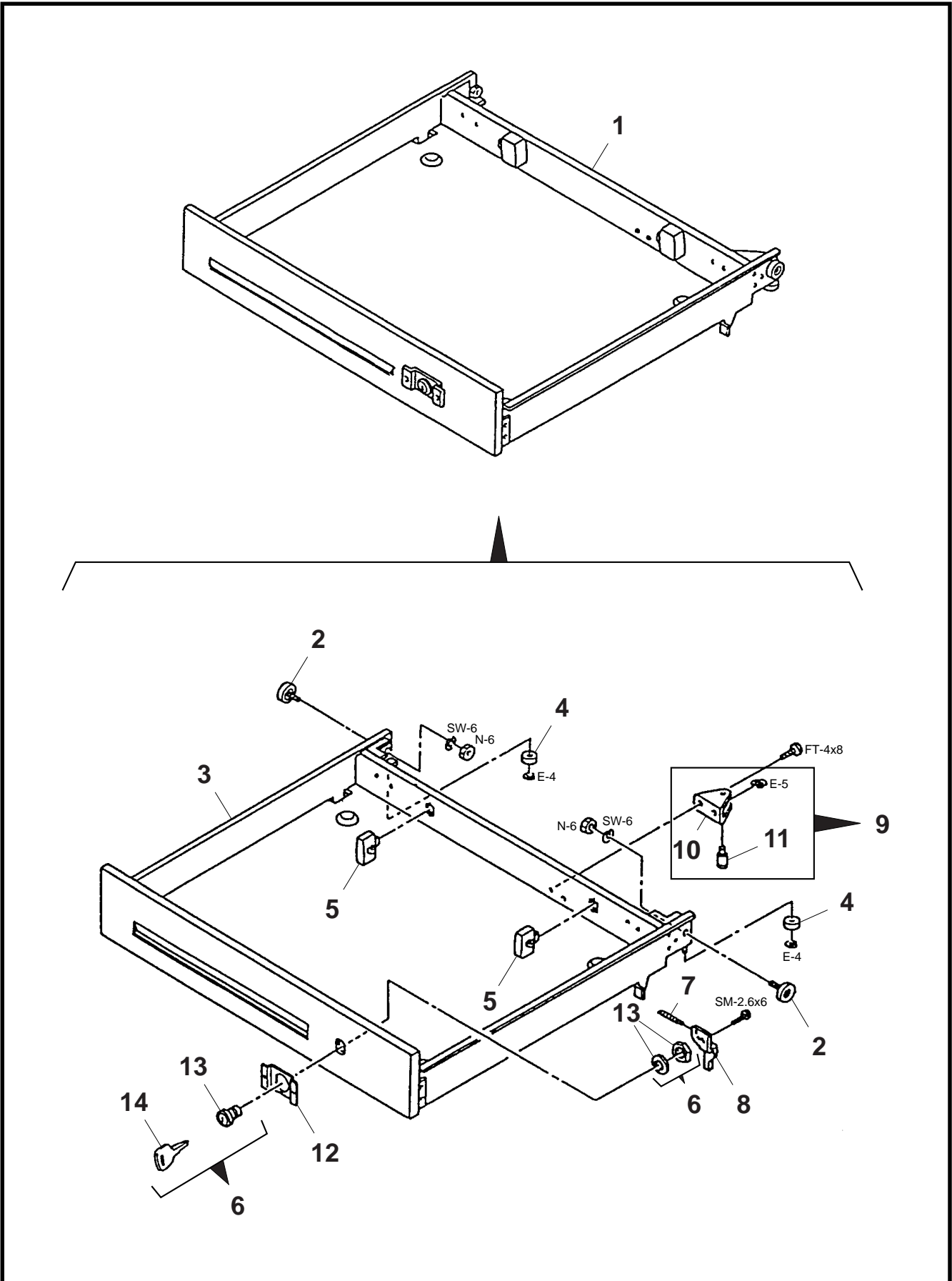
**DRAWER RELEASE BLOCK ASS'Y (SP TYPE)**  
**(P/N: RXMBK-02801)**

(Revision Date: Sep.17, 2001)

Ref.No.	Part No.	Description	Remarks	*1	*2	*3	*4
1	RXMBK-02801	Drawer Release Block		1			
2	KGKB0000701	Release Spring		1			
3	RXM45-00701	Drawer Dumper		1			
4	RXM20-11901	Release SP Holder		1			
5	KGQC0000301	DC Switch		1			
6	RXM20-11801	Release Cam		1			
7	RXM30-00301	Release Cam Spring		1			
8	RXM20-12001	Release Hook		1			
9	<del>KGBB0001101</del>	Solenoid Ass'y (with DC Switch)	Changed 9/2001	1			
	KGQC0001801	TDS-10A-1026					
10	EEA00-21700	4P Connector W-A3004		1			
11	RXMAK-03801	Release Base		1			
12	<del>EMA00-00400</del>	Fasten Band PLT1M-MJ	Changed 9/2001	2			
	FDC-0011003						

\*1: Q'ty/Unit \*2: Recommended Parts \*3: Revised Record \*4: New Parts

7 CASH BOX ASS'Y



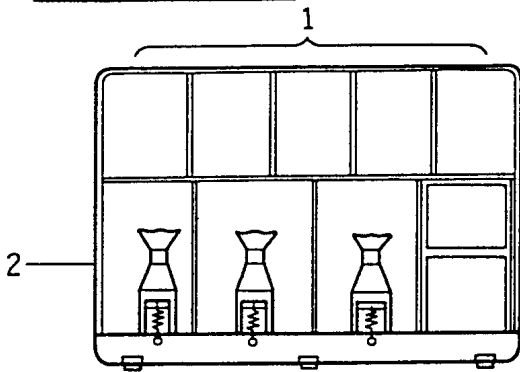
**7 CASH BOX ASS'Y**

Ref.No.	Part No.	Description	Remarks	*1	*2	*3	*4
7- 1	KGBD0000201	Cash Box Ass'y		1	C		
7- 2	RXX45-16002	Steel Bearing		2	C		
7- 3	KGCD0000201	Cash Box		1			
7- 4	RXM35-00301	Side Roller					
7- 5	RXM35-00101	M Stopper		2			
7- 6	KGQB0000401	DR Release Key-Lock Ass'y		1	C		
7- 7	RXM30-00201	Release Cam Spring					
7- 8	RXM20-01901	Release Key Lever		1			
7- 9	RXMAK-00301	Stopper Plate AK		1			
7-10	RXM20-00601	Stopper Plate (Y)		1			
7-11	RXX10-03001	Money Case Stopper B		1			
7-12	RXX20-71401	Key Cap Holder		1			
7-13	KGQB0001001	Drawer Lock		1			
7-14	KGQB0001101	Drawer Release Key		2			

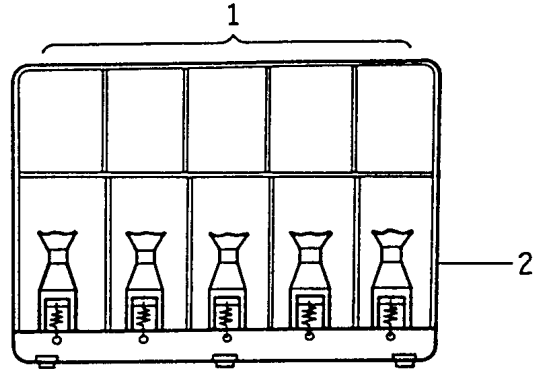
\*1: Q'ty/Unit \*2: Recommended Parts \*3: Revised Record \*4: New Parts

**8 MONEY CASE ASS'Y**

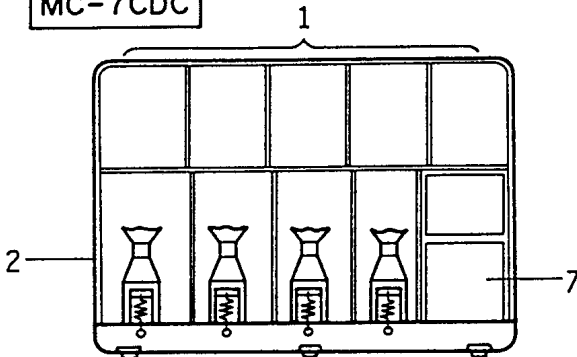
MC-5,MC-5CDC



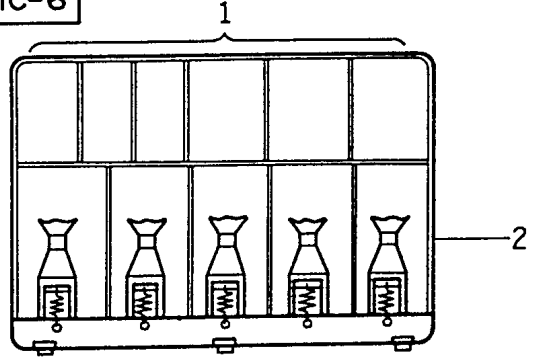
MC-4



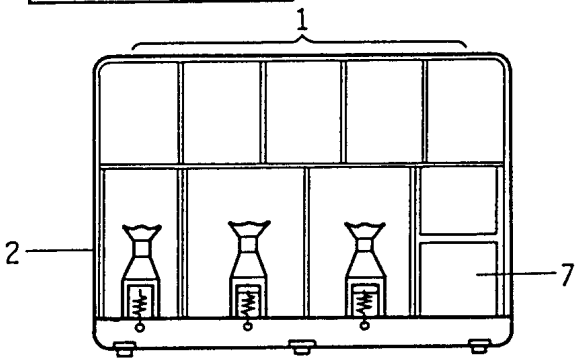
MC-7CDC



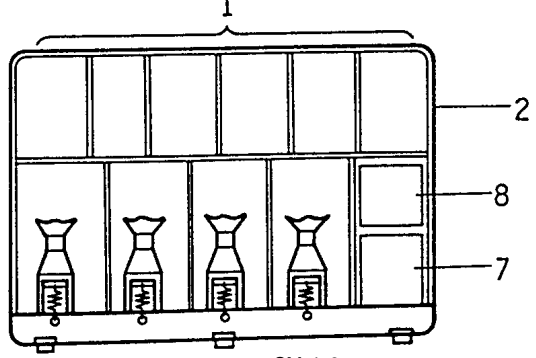
MC-6



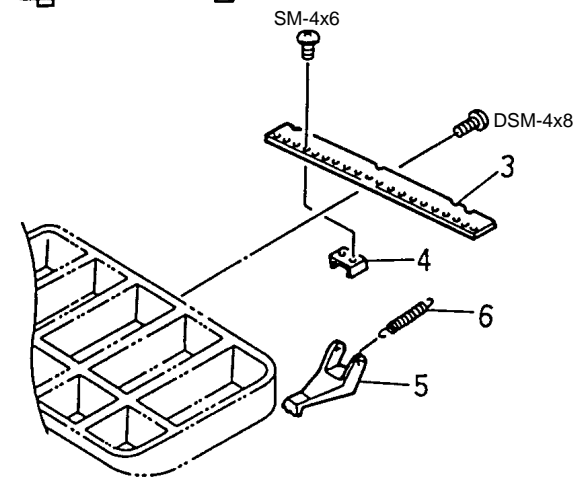
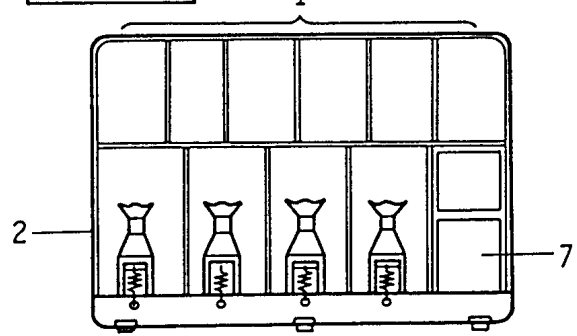
MC-9,MC-9CDC



MC-8CDC



MC-11CDC



**8 MONEY CASE ASS'Y**

Ref.No.	Part No.	Description	Remarks	*1	*2	*3	*4
8- 1	RXXBK-01401	Money Case Ass'y MC-4		1			
8- 2	RXXAK-06101	Money Case MC-4		1			
8- 3	RXX20-05601	Money Case Plate		1			
8- 4	RXX20-05701	Bill Holder Hook					
8- 5	RXX45-01301	Bill Holder			C		
8- 6	RXX30-00501	Bill Holder SP			C		
8- 7	RXX45-02801	Coin Case B		1			
8- 8	RXX35-03101	Small Coin Case		1			

\*1: Q'ty/Unit \*2: Recommended Parts \*3: Revised Record \*4: New Parts

**9 MISCELLANEOUS PARTS**

Ref.No.	Part No.	Description	Remarks	*1	*2	*3	*4
DSM-3x6	X0110306137	Double Sems Screw	M3x6				
DSM-3x8	X0110308137	Double Sems Screw	M3x8				
DSM-3x10	X0110310137	Double Sems Screw	M3x10				
DSM-4x6	X0110406137	Double Sems Screw	M4x6				
DSM-4x8	X0110408137	Double Sems Screw	M4x8				
SM-2.6x6	X0112F06131	Sems Screw	M2.6x6				
SM-3x6	X0110306131	Sems Screw	M3x6				
SM-4x6	X0110406131	Sems Screw	M4x6				
SM-4x25	X0110425131	Sems Screw	M4x25				
FL-3x8	X01G0308130	Flanged Screw	M3x8				
FLP-3x10	X06G0310133	Flanged P Tight Screw	M3x10				
FLS-3x6	X06G0306134	Flanged S Tight Screw	M3x6				
FLS-3x8	X06G0308134	Flanged S Tight Screw	M3x8				
FLS-3x12	X06G0312134	Flanged S Tight Screw	M3x12				
FLS-4x8	X06G0408134	Flanged S Tight Screw	M4x8				
FLS-4x14	X06G0414134	Flanged S Tight Screw	M4x14				
B-3x6	X01B0306140	Bind Screw	M3x6				
FT-3x6	X0310306130	FT Screw	M3x6				
FT-3x8	X0310308130	FT Screw	M3x8				
FT-4x6	X0610406138	FT Screw	M4x6				
FT-4x8	X0610408138	FT Screw	M4x8				
FT-4x8	X0310408130	FT Screw	M4x8				
P-2.3x10	X0112C10130	Pan Head Screw	M2.3x10				
P-2.6x6	X0612F06133	Pan P Tight P Screw	M2.6x6				
P-3x10	X0610310133	Pan Head P Tight Screw	M3x10				
TR-3x5	X01A0305140	Truss Screw	M3x5				
E-4	X76404K6500	E Ring	E-4				
E-4	X722040040A	E Ring	E-4				
E-5	X722050040A	E Ring	E-5				
FW	X7520601130	Flat Washer					
SW	X75606A5130	Spring Washer					
SW-6	X7110600630	Spring Washer	ø6				
W-3.3x6	SWB033060A2	Washer	ø3.3xø6				
N-6	X5110600130	Hexagon Nut	M6				

\*1: Q'ty/Unit \*2: Recommended Parts \*3: Revised Record \*4: New Parts