



ATM - Automated Teller Machines

All Metal Cabinets are The Best In The Industry



Features

- ✓ Most Affordable ATM On The Market Today
- ✓ Brand New with 2 Year Warranty
- ✓ All Steel Construction
- ✓ Illuminated ATM sign
- ✓ Visa Certified
- ✓ PCI Approved EPP
- ✓ 2" Thermal Printer
- ✓ Combination Safe Lock
- ✓ Optional Electronic Lock
- ✓ Puloon 1000 Bill Dispenser
- ✓ Optional DeLarue Mini Mech 1000 Bill Dispenser
- ✓ Optional Wide Cabinet With Full Size Delarue 2000 Bill Dispenser

Processing

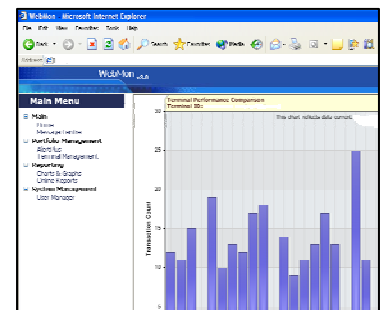
- ✓ Processes All Standard ATMs
- ✓ 100% Claims Management
- ✓ Personal Customer Service
- ✓ 99.999% Network Reliability
- ✓ 24 Hour Technical Support

Free Web Reporting

- ✓ Real Time On-Line Web Monitoring
- ✓ Monitor Cash Balance
- ✓ Real-Time Performance Updates
- ✓ Low Cash Alerts
- ✓ Current Terminal Status of All Your Terminals

Window Signs Available

- ✓ Drive More Traffic Into Your Store



Digital Network Solutions

Call Today
(904) 296-8200

**Advantages:**

Studies show that between 25%-35% of cash withdrawn from an ATM is spent at the location. This means you will have increased sales and higher ticket averages.

Lower Fee:

Reduce your cost associated with credit card terminal fees and bad checks. You earn income from the fee charged at the ATM (usually \$2.00-\$2.50), instead of paying any credit card terminal fees. More people have bank accounts than credit cards; almost every customer will have an ATM card and will no longer need to write checks for purchases. Instead, they will use the ATM, eliminating your concern over bad checks and bounced check charges. With real time dialup-approved or declined transactions, you have no charge backs.

Convenience:

Why go down the street, or make two stops when you can go one place and get everything done there? You provide a needed service to your busy customers, thus building customers loyalty. Offering them more services at your location increases the likelihood of them returning to your location when they need something.

What is my investment?

Your investment is one of the best quality ATM machines in the world. An ATM will generate residual income in the form of surcharges, and increase the amount of money spent at your location.

How does the ATM Work?

Customers access their accounts through your ATM to make a withdrawal. Their request for \$100.00 for example, has to be approved by their financial institution. Once approved, the machine will dispense the money you have loaded into the machine. During the approval process, the networks request that \$100.00 from your customer's bank account is transferred into your bank account. The surcharge fee is also taken from the customer's account at the time of the transaction.

Who does the Processing?

Digital Network Solutions. They provide you free technical support, monthly statements, and web reporting to track your machine's activity.

What is the average cash load in the ATM's?

The amount of cash that the retailer loads into the ATM depends on the transaction volume. Our experience is that the average withdrawal from the ATM is \$60.00. Most people start out with \$2000.00 cash in the ATM, and then based on your transactions per week adjust accordingly. Weekends, holidays, and special events you will need to plan to stock the ATM with more cash.

Warranty?

This ATM carries a full 2 year manufacturers warranty.

What about security for the ATM?

Each ATM is bolted to the ground, requiring 16,000 pounds of pressure to move it. The center section (where the cash is kept) is a UL rated vault with cassette key and security plate needed to open the cash box. Each machine can be individually alarmed, or be added to an already existing security system.

What about phone lines electrical outlets?

For smooth running, a dedicated phone line is required. This allows for proper communications between the ATM and the processing network. The machine only calls toll free (800) numbers and no long distance service is needed. The ATM should be plugged into a surge protected standard (110 volt) outlet.